

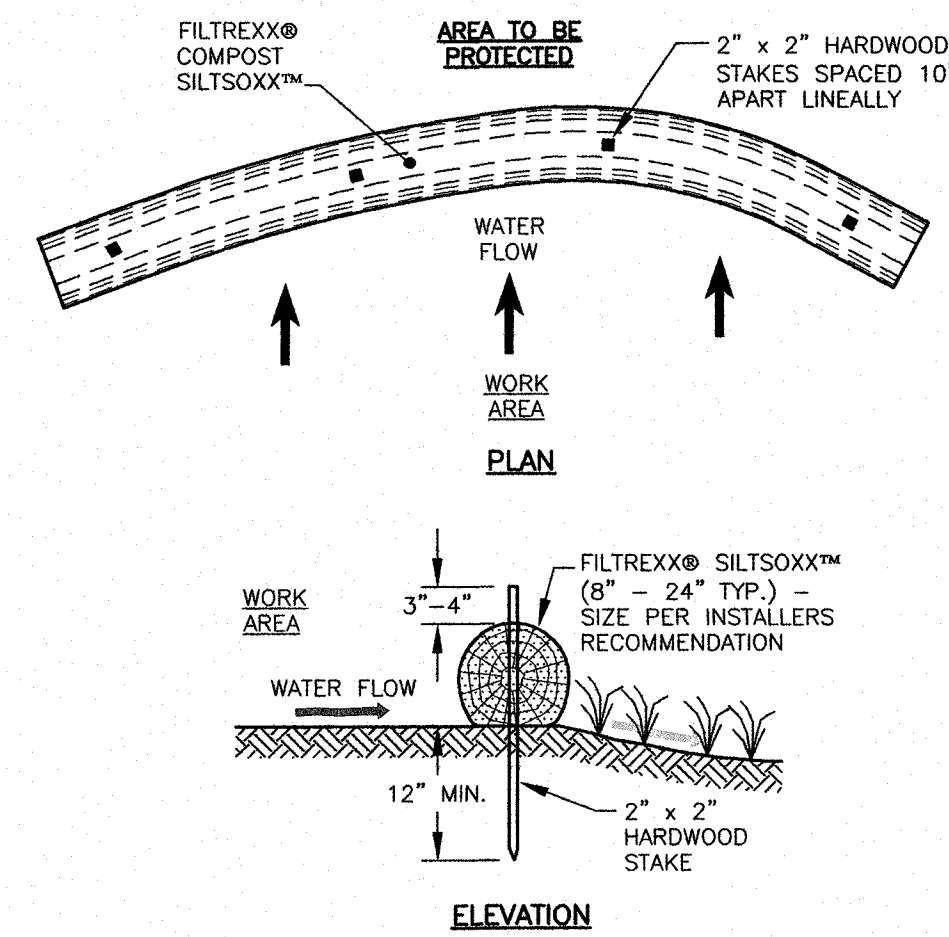


AMBIT ENGINEERING, INC.
Civil Engineers & Land Surveyors

200 Griffin Road - Unit 3
Portsmouth, N.H. 03801-7114
Tel (603) 430-9282
Fax (603) 436-2315

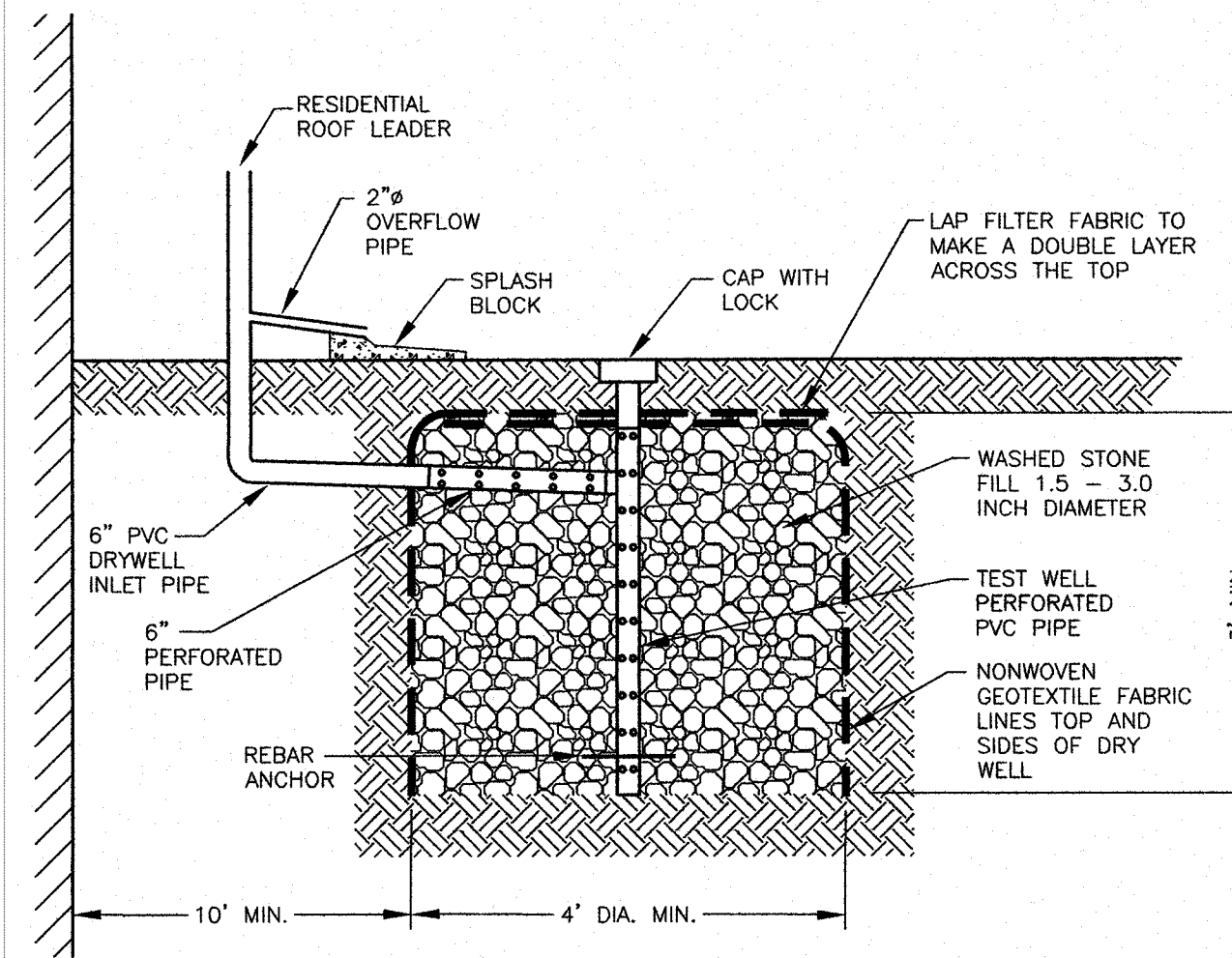
NOTES:

- 1) THE CONTRACTOR SHALL NOTIFY DIG SAFE AT 1-888-DIG-SAFE (1-888-344-7233) AT LEAST 72 HOURS PRIOR TO COMMENCING ANY EXCAVATION ON PUBLIC OR PRIVATE PROPERTY.
- 2) UNDERGROUND UTILITY LOCATIONS ARE BASED UPON BEST AVAILABLE EVIDENCE AND ARE NOT FIELD VERIFIED. LOCATING AND PROTECTING ANY ABOVEGROUND OR UNDERGROUND UTILITIES IS THE SOLE RESPONSIBILITY OF THE CONTRACTOR AND/OR THE OWNER. UTILITY CONFLICTS SHOULD BE REPORTED AT ONCE TO THE DESIGN ENGINEER.
- 3) CONTRACTOR SHALL INSTALL AND MAINTAIN EROSION CONTROL MEASURES IN ACCORDANCE WITH THE "NEW HAMPSHIRE STORMWATER MANUAL, VOLUME 3, EROSION AND SEDIMENT CONTROLS DURING CONSTRUCTION. (NHDES DECEMBER 2008).



- NOTES:**
1. ALL MATERIAL TO MEET FILTREXX SPECIFICATIONS.
 2. FILTREXX SYSTEM SHALL BE INSTALLED BY A CERTIFIED FILTREXX INSTALLER.
 3. THE CONTRACTOR SHALL MAINTAIN THE COMPOST FILTRATION SYSTEM IN A FUNCTIONAL CONDITION AT ALL TIMES. IT WILL BE ROUTINELY INSPECTED AND REPAIRED WHEN REQUIRED.
 4. SILTSOXX DEPICTED IS FOR MINIMUM SLOPES. GREATER SLOPES MAY REQUIRE ADDITIONAL PLACEMENTS.
 5. THE COMPOST FILTER MATERIAL WILL BE DISPERSED ON SITE WHEN NO LONGER REQUIRED, AS DETERMINED BY THE ENGINEER.

A FILTREXX® SILTSOXX™ FILTRATION SYSTEM
C2 NTS



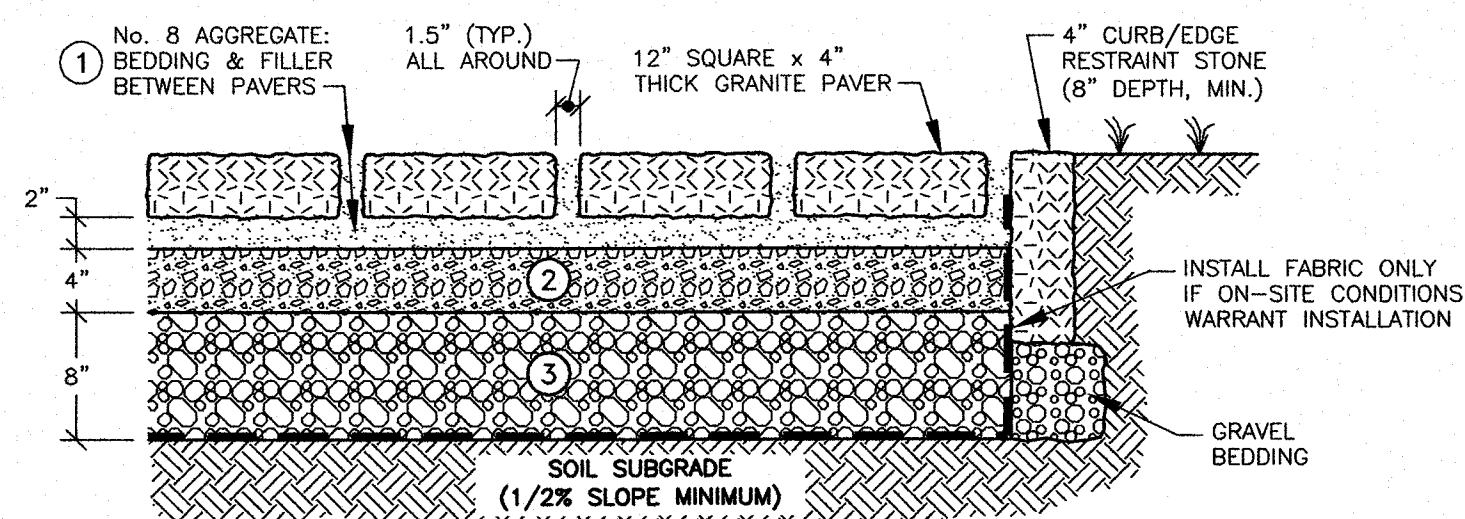
- NOTES:**
- 1) THE BASIN SHALL BE PROTECTED FROM SEDIMENT LADEN RUNOFF WITH A SEDIMENT FILTER UNTIL ALL AREAS ABOVE THE BASIN ARE STABILIZED.
 - 2) THE BASIN SHALL BE INSPECTED ANNUALLY OR MORE FREQUENTLY IF NEEDED. REPLACE UPON FAILURE.

C DRYWELL WITHOUT STRUCTURE
C2 NTS

ASTM D 448 GRADATION TABLE

①		②		③	
ASTM No. 8 BEDDING & JOINT FILLER		ASTM No. 57 STONE OPEN GRADED BASE		ASTM No. 2 STONE SUBBASE	
SIEVE SIZE	PASSING BY WEIGHT (%)	SIEVE SIZE	PASSING BY WEIGHT (%)	SIEVE SIZE	PASSING BY WEIGHT (%)
1/2" (12.5mm)	100	1.5" (37.5mm)	100	3" (75mm)	100
3/8" (9.5mm)	85-100	1" (25mm)	95-100	2.5" (63mm)	90-100
No. 4 (4.75mm)	10-30	1/2" (12.5mm)	25-60	2" (50mm)	35-70
No. 8 (2.36mm)	0-10	No. 4 (4.75mm)	0-10	1.5" (37.5mm)	0-15
No. 16 (1.16mm)	0-5	No. 8 (2.36mm)	0-5	3/4" (19mm)	0-5

- NOTES:**
- 1) PAVING SYSTEM BASE DESIGN IS SIMILAR TO BASE REQUIRED FOR THE UNI-ECO-STONE PAVER. INSTALLATION SHALL FOLLOW MANUFACTURER'S INSTRUCTIONS FOR PLACEMENT OF BASE MATERIALS.
 - 2) ALL STONE SHALL BE ANGULAR, WITH 90% FRACTURED FACES. STONE SHALL BE WASHED WITH LESS THAN 1% PASSING THE 200 SIEVE.
 - 3) CONTRACTOR SHALL SUBMIT SIEVE ANALYSIS FOR EACH COURSE MATERIAL TO PROJECT ENGINEER FOR APPROVAL PRIOR TO PLACEMENT.



B POROUS PAVEMENT SECTION
C2 12" SQUARE GRANITE PAVERS (OR APPROVED EQUAL)
NTS

MAP: 111 LOT: 3

SWIRLY GIRL II, LLC
244 SOUTH STREET
PORTSMOUTH, NH

REVISIONS		
NO.	DESCRIPTION	DATE
0	ISSUED FOR COMMENT	4/25/17

SCALE: AS SHOWN APRIL 2017

DETAILS

D1