



1.



2.

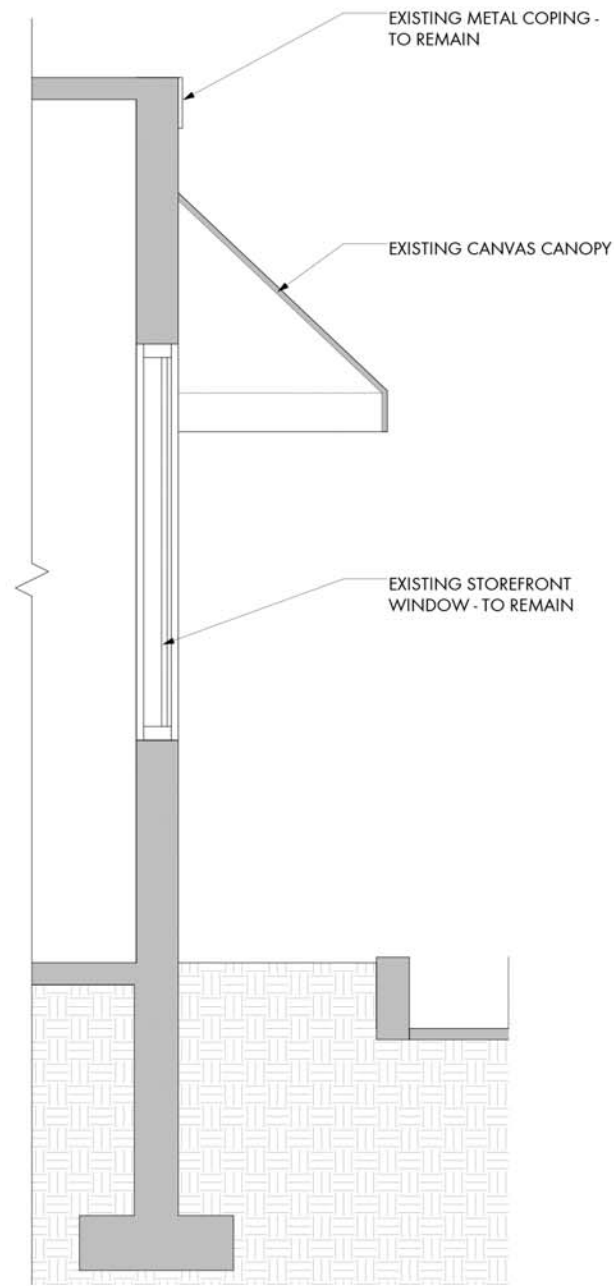
CLARIZIO OFFICE
566 ISLINGTON STREET, PORTSMOUTH, NEW HAMPSHIRE

CONTEXT PHOTOS
1/4" = 1'-0"

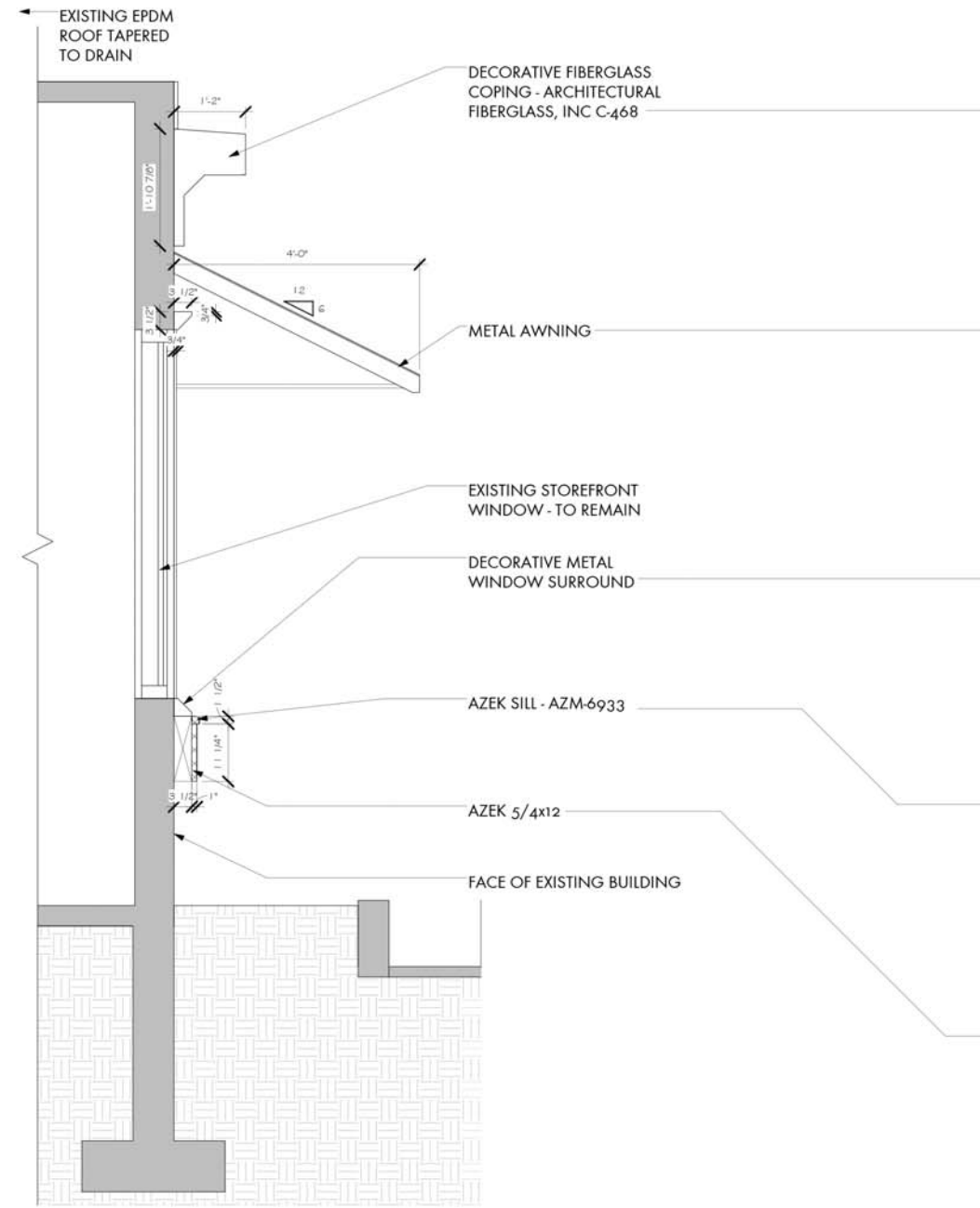
PROJECT NO.
9 AUGUST 2017



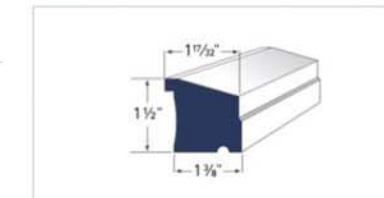
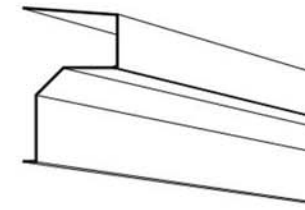
C-468
 DEPTH: 1'-2"
 HEIGHT: 1'-10 7/8"



Section 2
 3/4" = 1'-0" 2



Section 1
 3/4" = 1'-0" 1



Sub Sill Nose AZM-6933
 LENGTH: 16'





PROPOSED ISLINGTON STREET ELEVATION 2
1/4" = 1'-0"



PROPOSED S ALBANY STREET ELEVATION 1
1/4" = 1'-0"

CLARIZIO OFFICE
566 ISLINGTON STREET, PORTSMOUTH, NEW HAMPSHIRE

PROPOSED ELEVATIONS
1/4" = 1'-0"

9 AUGUST 2017

PROJECT NO.

D|A
DeStefano Architects

© 2017