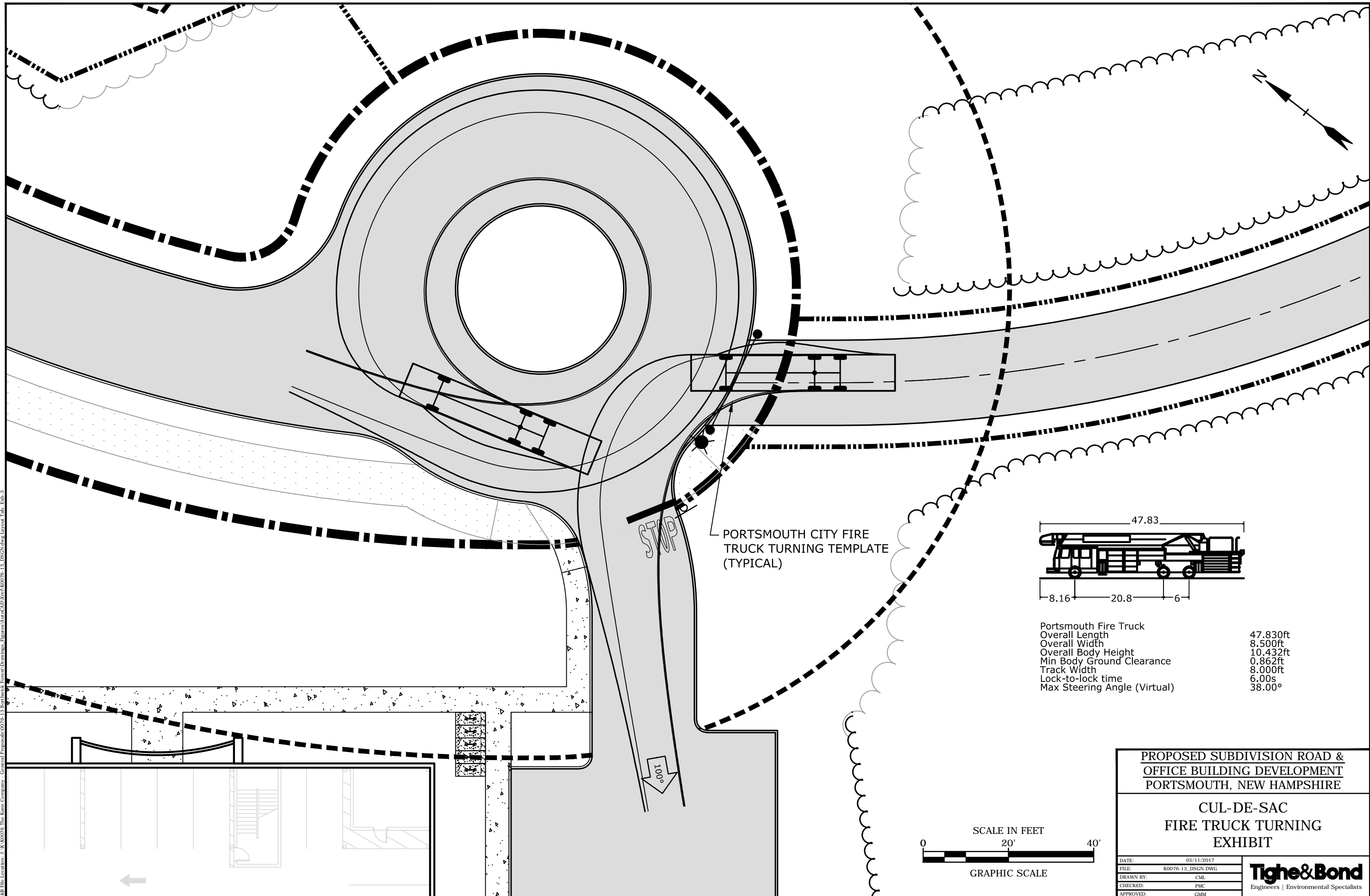
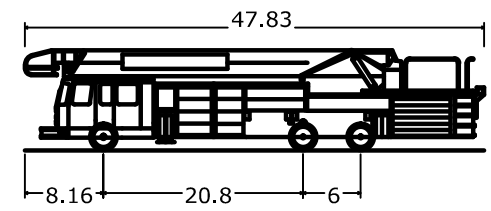


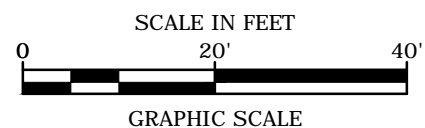
Last Save Date: May 9, 2017 1:32 PM By: BL  
 Plot Date: Tuesday, May 09, 2017 Plotted By: Barbara J. Lamb  
 Plot File Location: J:\2017\The Same Company - General Proposals\00761\_13\_Burheadk\_Forest\Drawings\_Export\Act\CD\Act\K0076\_13\_DSGN.dwg Layout Tab: Exh-3



PORTSMOUTH CITY FIRE TRUCK TURNING TEMPLATE (TYPICAL)



Portsmouth Fire Truck	47.830ft
Overall Length	8.500ft
Overall Width	10.432ft
Overall Body Height	0.862ft
Min Body Ground Clearance	8.000ft
Track Width	6.00s
Lock-to-lock time	38.00°
Max Steering Angle (Virtual)	



PROPOSED SUBDIVISION ROAD &  
OFFICE BUILDING DEVELOPMENT  
PORTSMOUTH, NEW HAMPSHIRE

CUL-DE-SAC  
FIRE TRUCK TURNING  
EXHIBIT

DATE:	05/11/2017
FILE:	K0076-13_DSGN.DWG
DRAWN BY:	CML
CHECKED:	PMC
APPROVED:	GMM

**Tighe & Bond**  
Engineers | Environmental Specialists