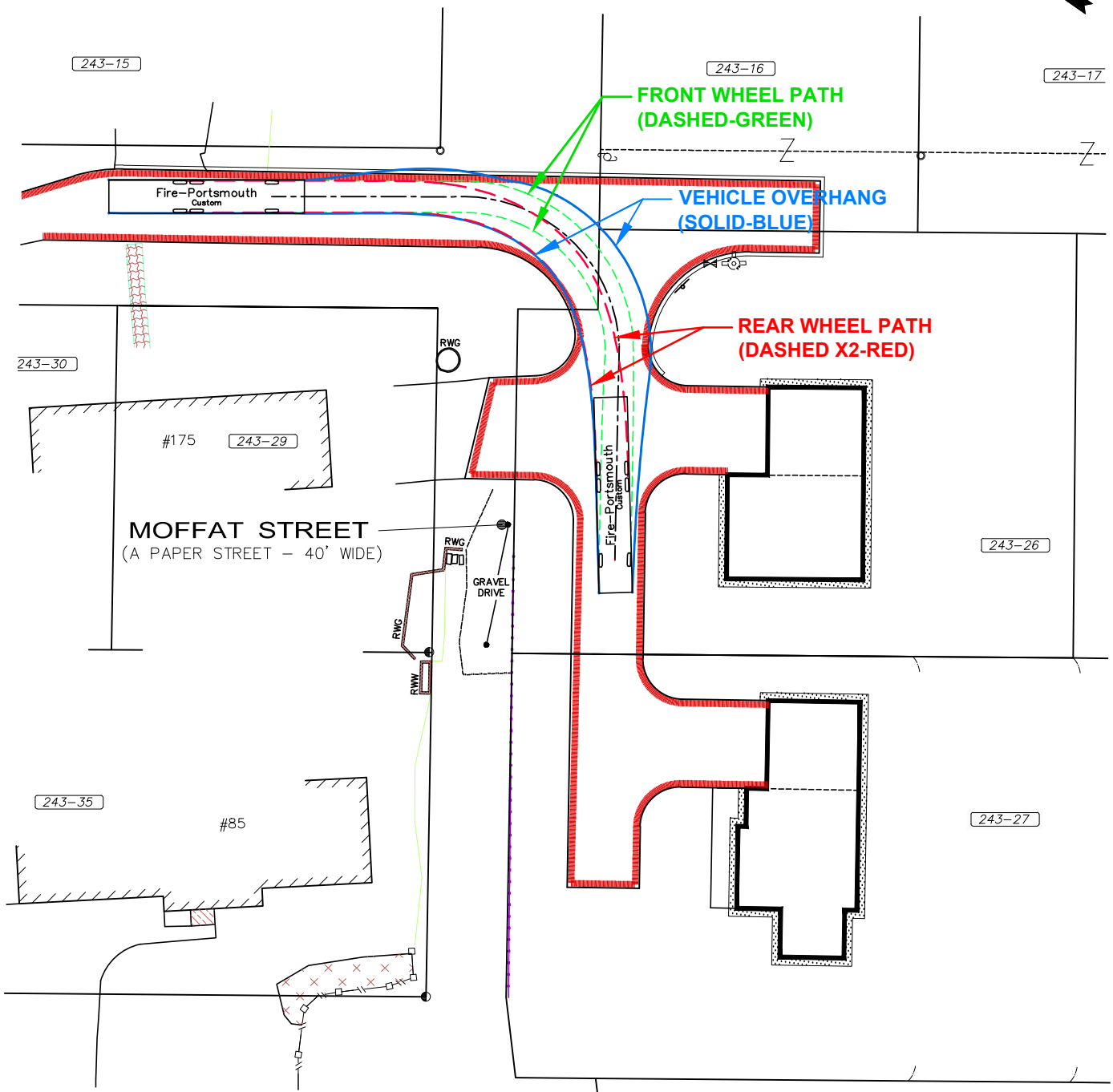
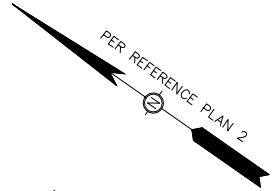
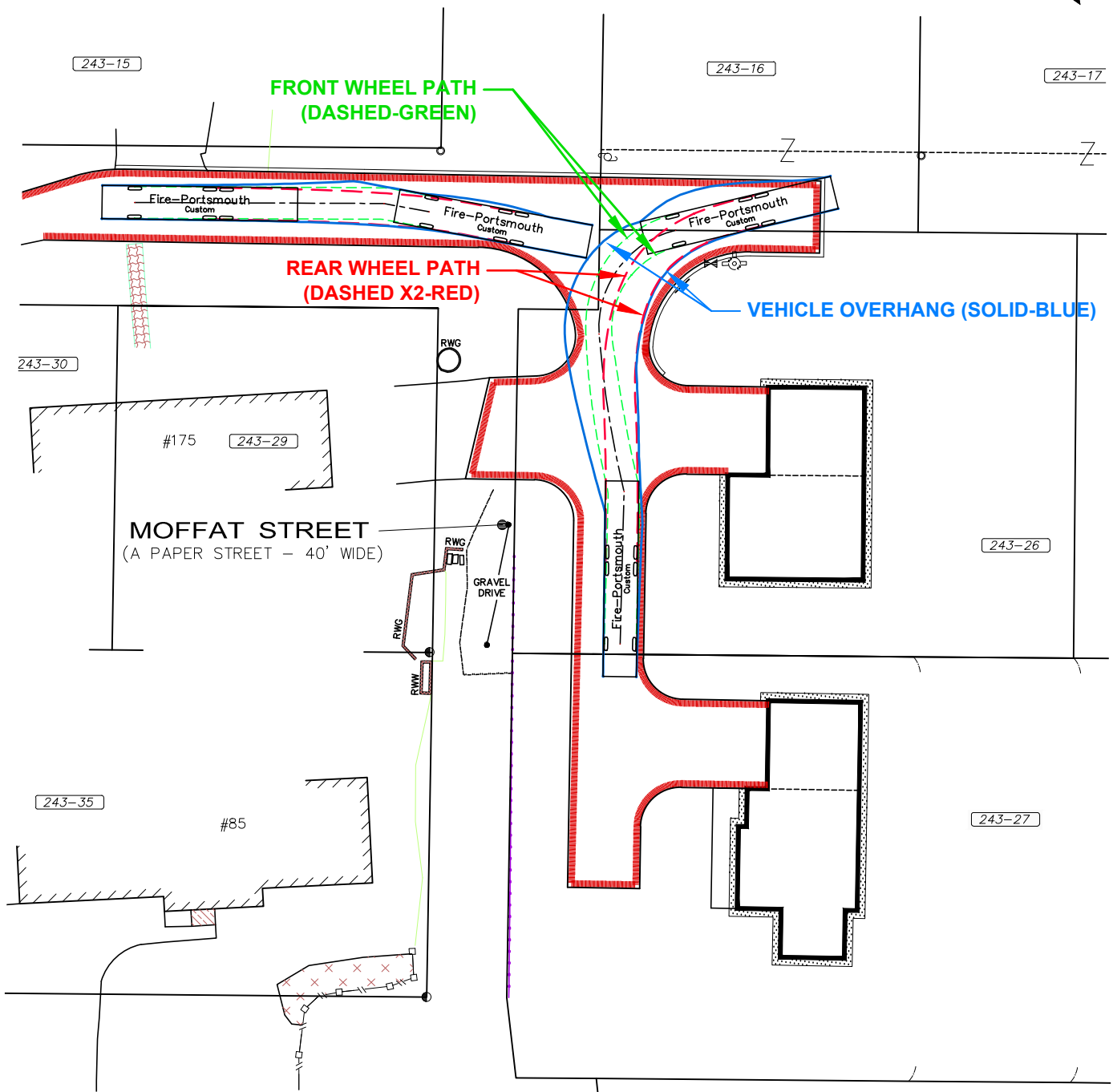
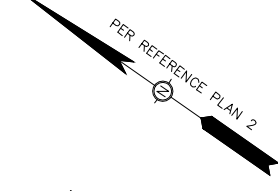


ENTERING



EXITING



ENGINEER:

 133 COURT STREET PORTSMOUTH, NH 03801
 (603) 433-2335 www.ALTUS-ENG.com

ISSUED FOR: TAC SUBMISSION
 ISSUE DATE: JULY 20, 2017

NO.	DESCRIPTION	BY	DATE
0	INITIAL SUBMISSION	EDW	06/19/17
1	TAC SUBMISSION	EDW	07/20/17

DRAWN BY: _____ RLH
 APPROVED BY: _____ EDW
 DRAWING FILE: 4814_DESIGN.DWG

SCALE:
 22" x 34" - 1" = 20'
 11" x 17" - 1" = 40'

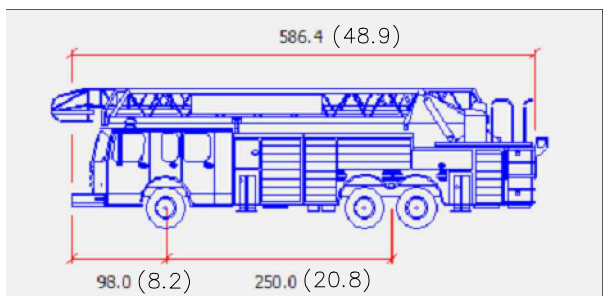
OWNER:
 TAX MAP 243,
 LOTS 25, 26, 27 & 28
 409 FRANKLIN PIERCE
 224 MILL POND WAY
 NOTTINGHAM, NH 03090

APPLICANT:
 DAVID CALKINS
 175 WOODLAWN CIRCLE
 PORTSMOUTH, NH

PROJECT:
**PROPOSED SITE
 DEVELOPMENT
 PLANS**
 MOFFAT & SWETT
 AVENUES
 PORTSMOUTH, N.H.
 ASSESSOR'S PARCELS
 MAP-243
 LOTS 25, 26, 27 & 28

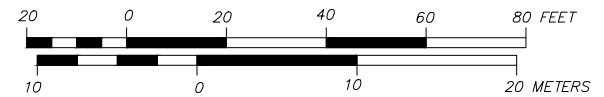
TITLE:
**AUTO TURN
 WORKSHEET**

SHEET NUMBER:
1 of 1



CITY OF PORTSMOUTH FIRE TRUCK
 (INFERNO MID-MOUNT PLATFORM)
 DIMENSIONS IN INCHES (FEET)

FIRE TRUCK TURNING MOVEMENTS



P4814