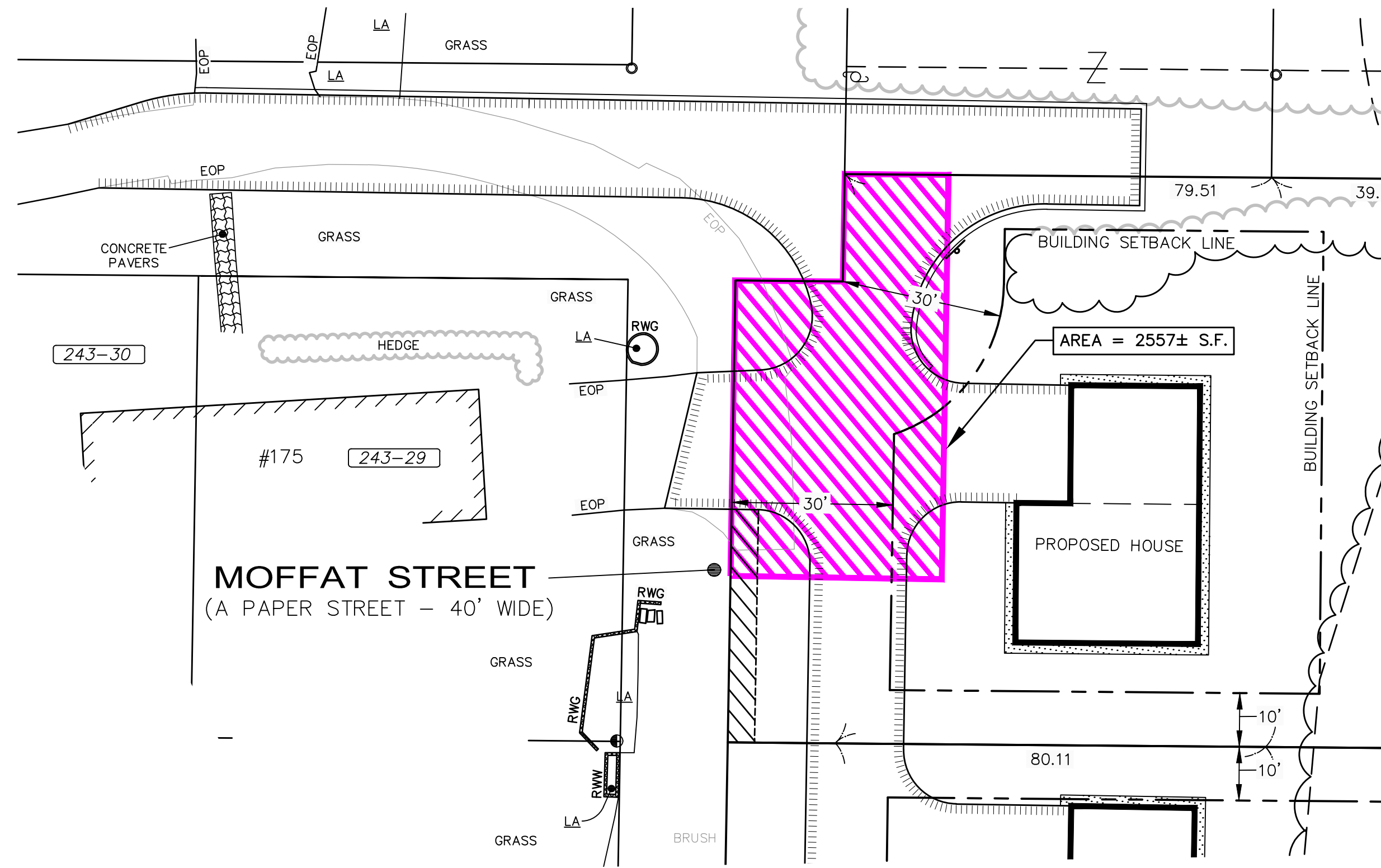
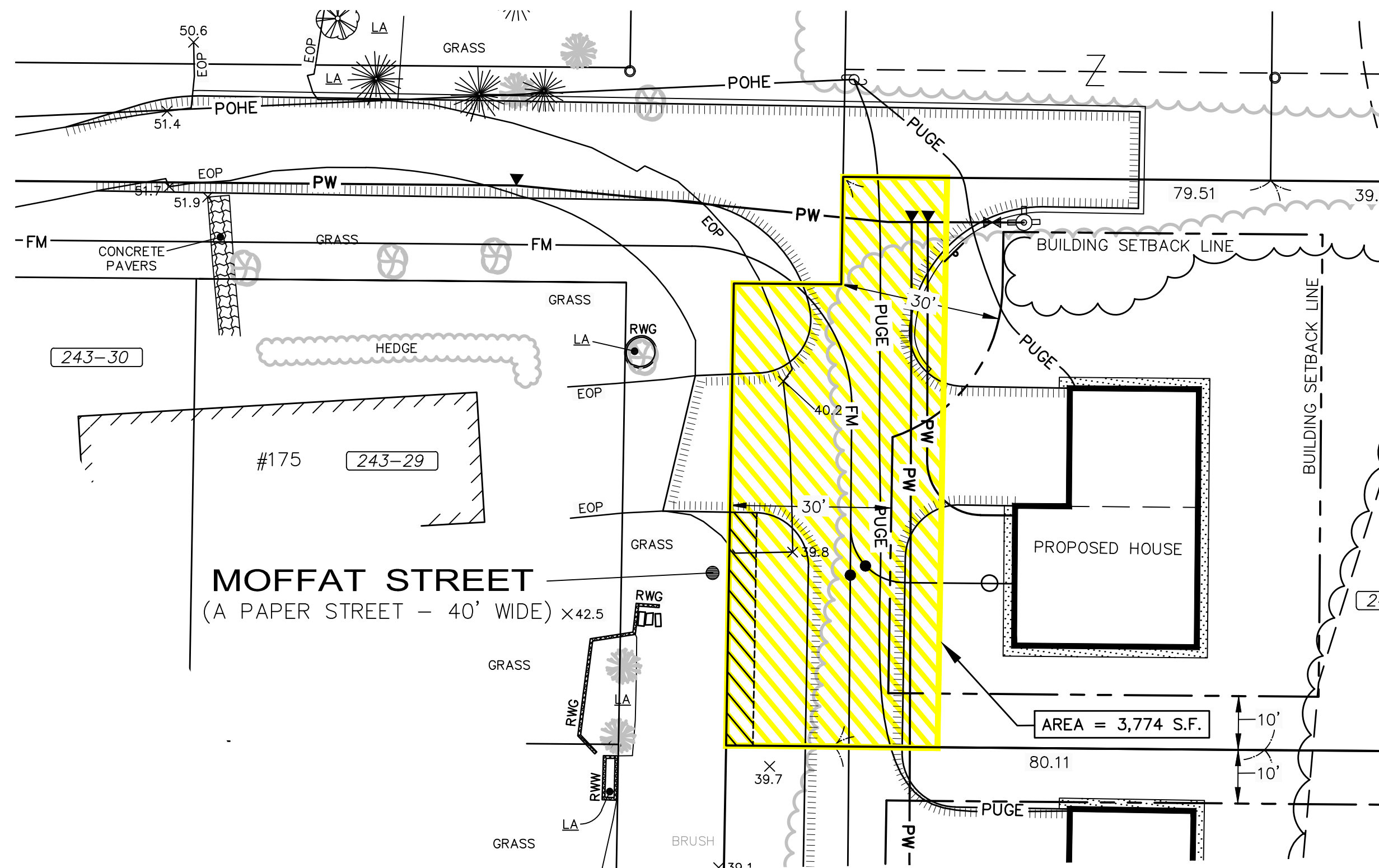


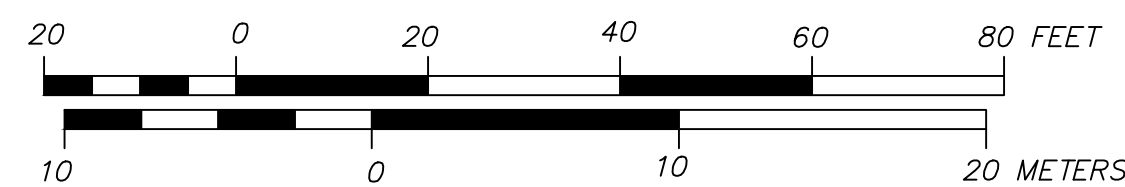
UTILITY & ACCESS EASEMENT IN FAVOR OF CITY OF PORTSMOUTH FROM LOT 243-26



ACCESS EASEMENT IN FAVOR OF LOT 243-27 FROM LOT 243-26



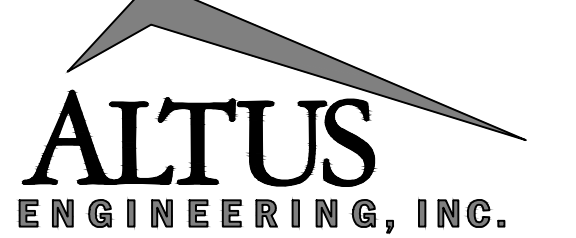
ACCESS & UTILITY EASEMENT IN FAVOR OF LOT 243-27 FROM LOT 243-24



SURVEYOR:
James Verra and
Associates, Inc.
LAND SURVEYORS

101 SHATTUCK WAY - SUITE 8
NEWINGTON, N.H. 03801-7876
603-436-3557
JOB NO: 23697
PLAN NO: 23697-2

ENGINEER:



133 COURT STREET PORTSMOUTH, NH 03801
(603) 433-2335 www.ALTUS-ENG.com

ISSUED FOR:
TAC SUBMISSION

ISSUE DATE:
JULY 20, 2017

NO.	DESCRIPTION	BY	DATE
0	TAC SUBMISSION	EDW	7/20/17

DRAWN BY: _____ RLH
APPROVED BY: _____ EDW
DRAWING FILE: _____ 4814_DESIGN.DWG

SCALE:
22" x 34" - 1" = 20'
11" x 17" - 1" = 40'

OWNER:
TAX MAP 243,
LOTS 25, 26, 27 & 28
409 FRANKLIN PIERCE
224 MILL POND WAY
NOTTINGHAM, NH 03090

APPLICANT:
DAVID CALKINS
175 WOODLAWN CIRCLE
PORTSMOUTH, NH

PROJECT:
PROPOSED SITE
DEVELOPMENT
PLANS
MOFFAT & SWETT
AVENUES
PORTSMOUTH, N.H.
ASSESSOR'S PARCELS
MAP-243
LOTS 25, 26, 27 & 28

TITLE:
EASEMENT
PLAN

SHEET NUMBER:
1 OF 1

P4814